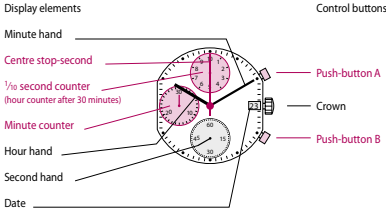




Description of the display and control buttons



01

Chronograph: Basic function

(Start / Stop / Reset)

Example:

- 1 Start: Press push-button A.
- 2 Stop: to stop the timing, press push-button A once more and read the 3 chronograph counters: 4 min / 38 sek / 7/10 sec
- 3 Zero positioning: Press push-button B. (The 3 chronograph hands will be reset to their zero positions).

05

Chronograph: Accumulated timing

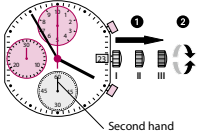
Example:

- 1 Start: (start timing)
- 2 Stop: (e.g. 15 min 5 sec following 1)
- 3 Restart: (timing is resumed)
- 4 Stop: (e.g. 13 min 5 sec following 3) = 28 min 10 sec (The accumulated measured time is shown)
- 5 Reset: The 3 chronograph hands are returned to their zero positions.

Please note:
* Following 4, the accumulation of the timing can be continued by pressing push-button A (Restart / Stop, Restart / Stop, ...)

06

Setting the time



- 1 Pull out the crown to position III (the watch stops).
- 2 Turn the crown until you reach the correct time 8:45.
- 3 Push the crown back into position I.

Please note:
* In order to set the time to the exact second, 1 must be pulled out when the second hand is in position «60» (I). Once the hour and minute hands have been set, 3 must be pushed back into position at the exact second.

02

Chronograph: Intermediate or interval timing

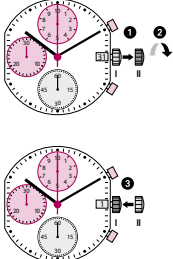
Example:

- 1 Start: (start timing)
- 2 Display interval: e.g. 10 minutes 10 seconds (timing continues in the background)
- 3 Making up the measured time: (the 3 chronograph hands are quickly advanced to the ongoing measured time).
- 4 Stop: (Final time is displayed)
- 5 Reset: The 3 chronograph hands are returned to their zero position

Please note:
* Following 2, further intervals or intermediates can be displayed by pressing push-button B (display interval / make up measured time, ...)

07

Setting the date (quick mode)

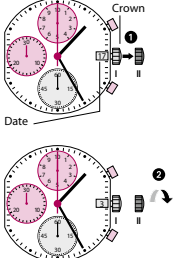


- 1 Pull out the crown to position II (the watch continues to run).
- 2 Turn the crown anticlockwise until the correct date appears.
- 3 Push the crown back into position I.

Please note:
During the date changing phase between 08.30 PM and 12 PM, the date must be set to the date of the following day.

03

Setting the date/time



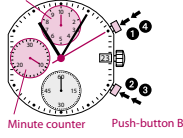
Example:
- Date / time on the watch: 17 / 1:25 AM
- Present date / time: 4 / 8:30 PM

- 1 Pull out the crown to position II (the watch continues to run).
- 2 Turn the crown anticlockwise until yesterday's date appears.
- 3 Pull out the crown to position III (the watch stops).
- 4 Turn the crown until the correct date appears.
- 5 Continue to turn the crown until the correct time 8:30 PM appears.
- 6 Push the crown back into position I.

Please note:
* To set your watch to the exact second, please refer to the chapter entitled «setting the time».
** Please observe the AM/PM clock rhythm.

04

Adjusting the chronograph hands to zero position



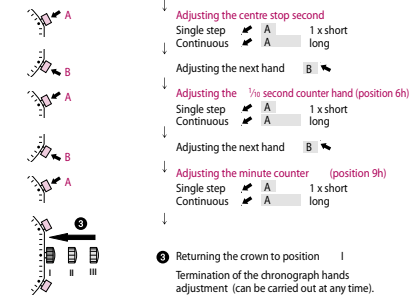
Adjusting the chronograph hands to zero position

Example:

- 1 Pull out the crown to position III (all 3 chronograph hands are in their correct or incorrect zero position).
- 2 Keep push-buttons A and B depressed simultaneously for at least 2 seconds (the centre stop-second rotates by 360 degrees -> corrective mode is activated).

One or several chronograph hands are not in their correct zero positions and have to be adjusted (e.g. following a battery change).

08



Battery type: 384 (diameter 79 mm x 3.6 mm / SR 41 SW)
Accuracy: +20 / -10 seconds per month

